

# How fast is too fast?

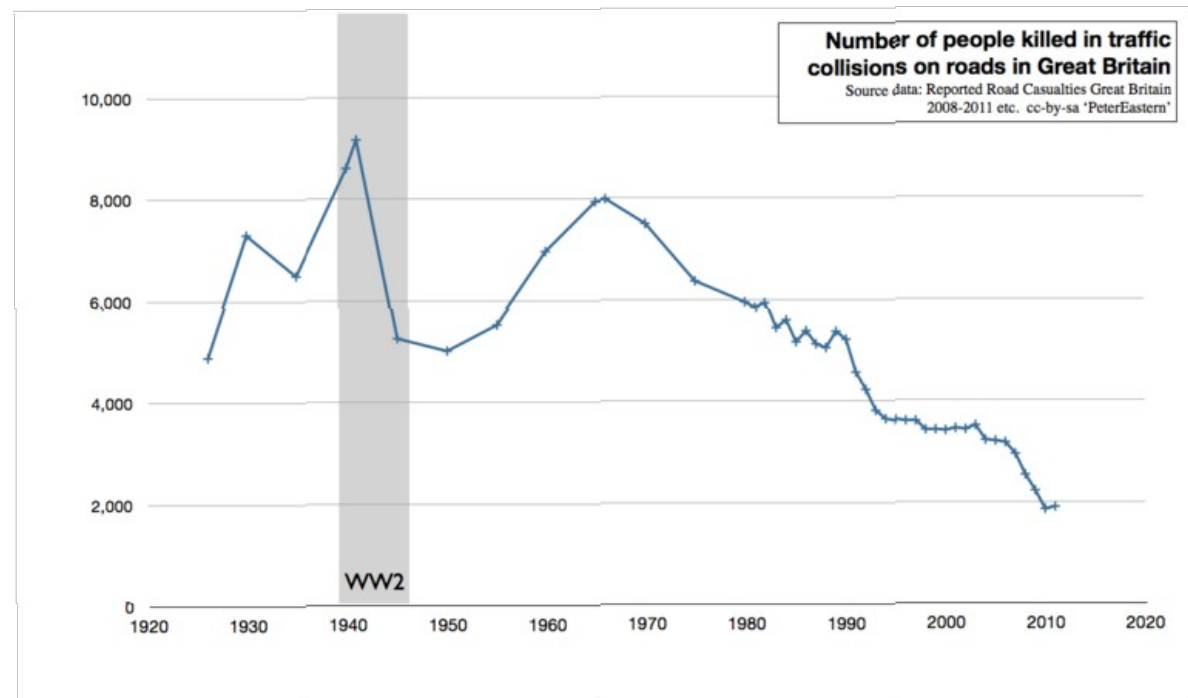


# The UK has.....

- 34m vehicles, of which 28m are cars.
- Motorways 2705 miles,
- A /trunk roads 29934 miles,
- B roads 18799 miles,
- Minor public roads 195,395 miles.
- And....bikers, cyclists, pedestrians.
- And.....

## A national speed limit of 70 mph

- Since 1965, the max. speed for a car up to two tonnes, motorcycles, buses up to 12 metres long, goods vehicles <7.5 tonnes MLW on most motorways, and some dual carriageways is 70 mph. And road deaths of...



# The stakeholders

- Parliament, Department of Transport,
- AA/RAC/Assoc of British Drivers, Advanced Driving Institute, BRAKE,
- Local councils, local people-pressure groups.
- Living streets, Safe speed,
- The DOT has relied on the slogan SPEED KILLS for many campaigns in recent years.

# However,

- Modern road travel is safe. But not for everyone.
- Motorways are safe compared to all other roads.
- Less safe are pedestrians, bikers, cyclists, children, and motorists on minor and trunk roads where improvements have been less evident.
- The stunning feature of road safety is the number of injuries.
- Arguably the pivotal factor in reducing death and injury is the significant and rising impact of S+T.

# A typical year on UK roads 2008.

- Motorways, 158 killed, 869 seriously injured, 10,444 slight or minor injuries.
- A/trunk roads. 1057 killed, 16,823 serious injuries 143,079 slight or minor injuries.
- Other roads 1323 killed, 8342 seriously injured 48,810 slight or minor injuries

## The impact of science and technology

- Seat belts, head restraints, side protection, air bags, materials,
- Improved road crossings, road safety engineering, road signs.
- Improved tyres and braking, anti-lock brakes, door locks, reinforced roofs, roll bars.
- NCAP ratings, Advanced NCAP. Crash test dummies. Sensors.
- AEB, ESC, progressive crumple zones, tachographs, auto lane tracking (LDW), blind - spot radar or cameras.
- (Licensing) and MOT testing. Child safety seats,
- (Cruise control), heated windows, ice warning, improved glass. Breathalysers. GATSO.
- Protective clothing, air bags, helmets, neck and back protectors for bikers; cyclists helmets.



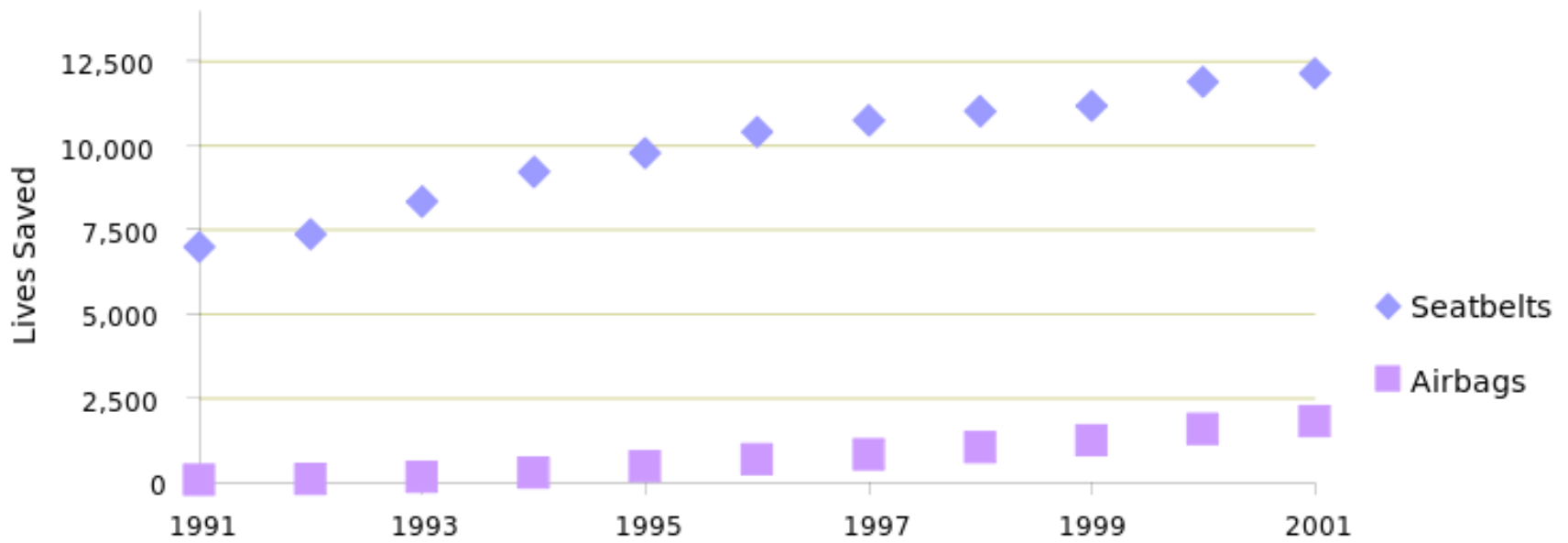
**GHOS**



**CLEARANCE  
HURRY  
LIMITED STOCK**







# Other factors affecting safety.

- Congestion, poor weather conditions, there is no statutory requirement for reduced speed. (but see Highway Code)
- Taunton Nov 4, 2011.
- Young male drivers. Use of handheld mobile phones. Temperament.
- Left hand side driven HGVs are involved in many serious accidents.
- Alcohol and drug use.

# 2005-2010 alcohol/drug caused accidents.

Deaths 350 to  
230

Serious injury  
1490-1230

Slight injury  
10850 - 8220

Fell 19% from  
12030-9700

# Bikers account for **1%** of road traffic But **21%** of fatalities

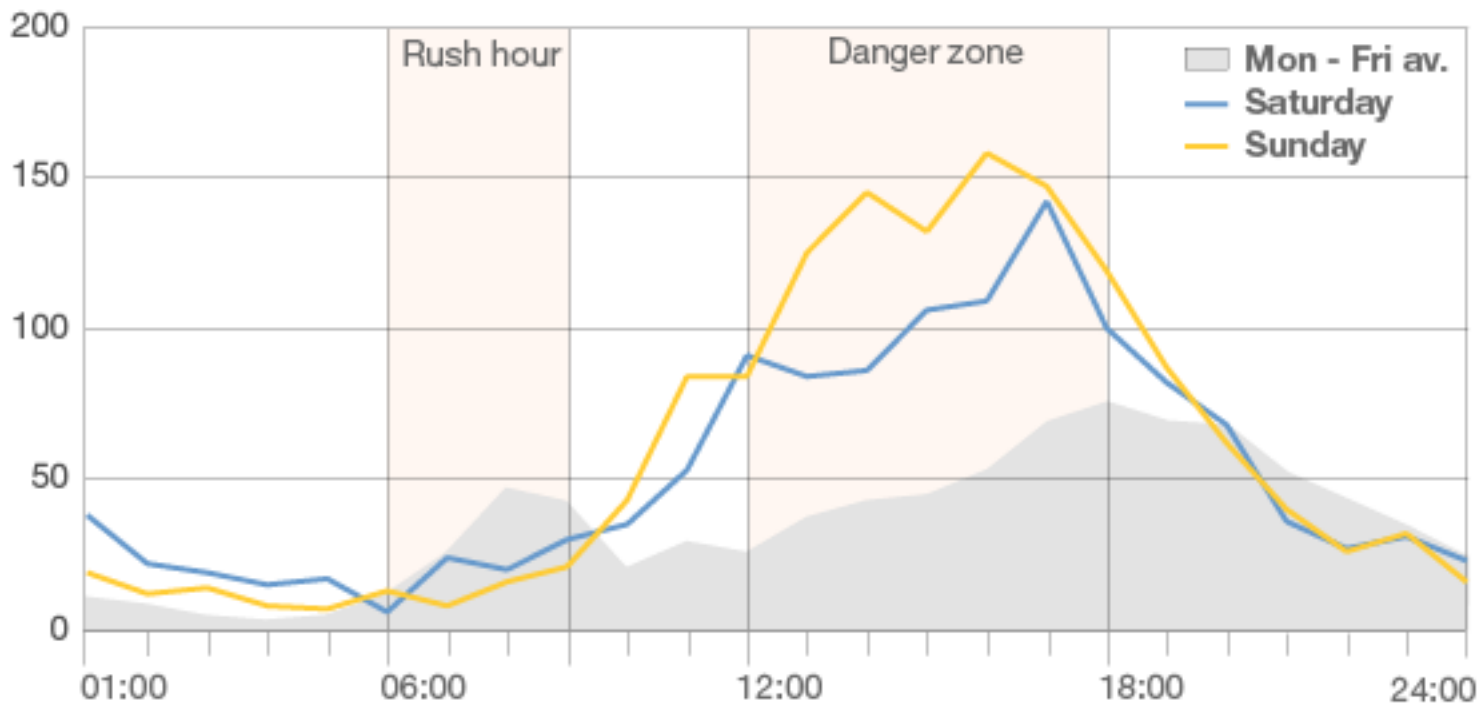
Casualty rate per billion miles travelled\*



\*Killed and seriously injured

## Weekend rides most dangerous 1999 -2010

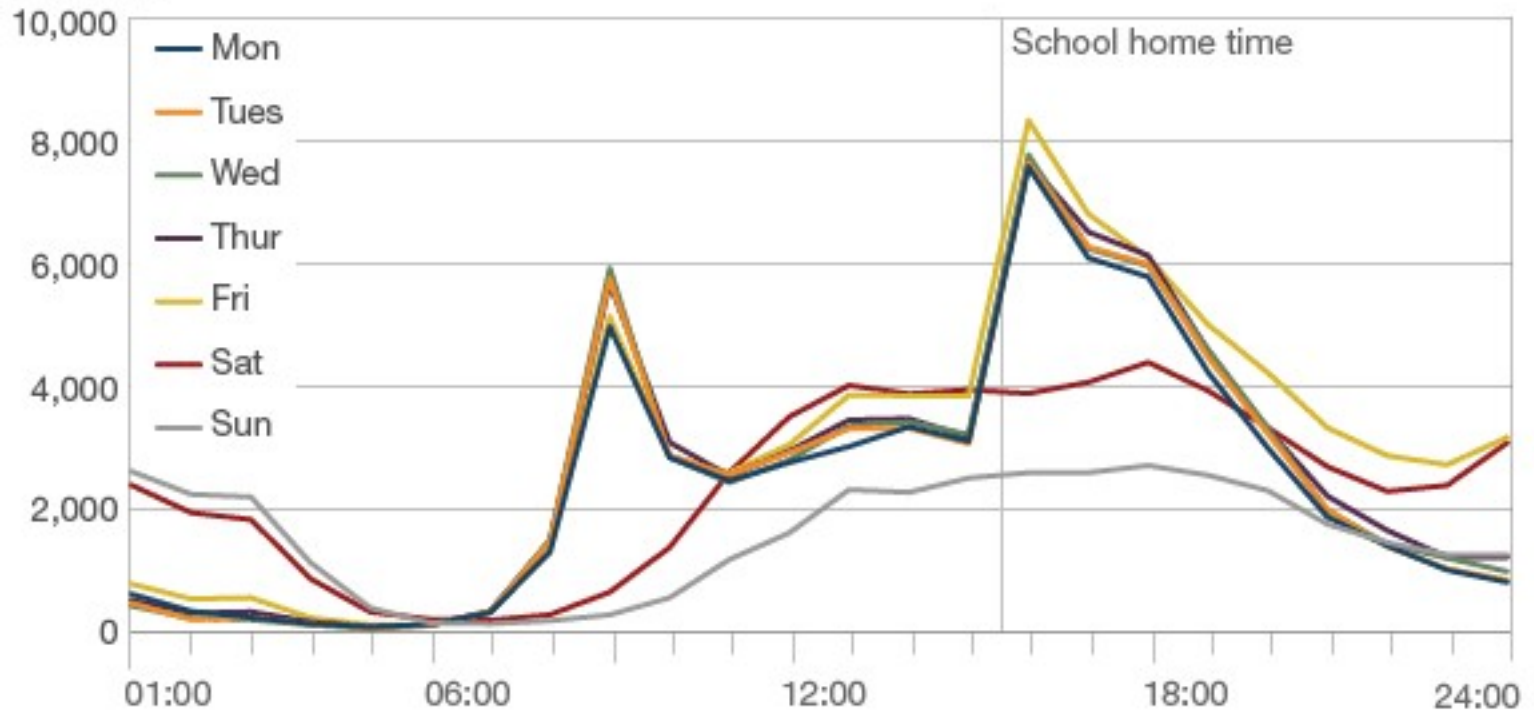
Deaths



# 8,242 pedestrians were killed 1999 – 2010

## Pattern of pedestrian casualties across the week

Casualties



## Buses and pedestrian deaths on Oxford Street



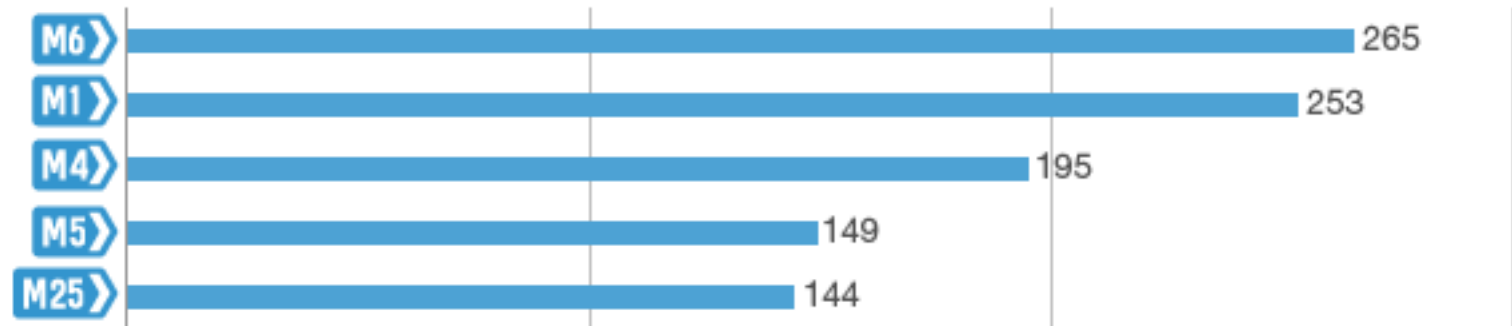
## Motorway crashes 1999 – 2010

Top five



## Deaths

Top five



## Britain's most crash-prone motorway?



one mile long, 350 crashes 1999 – 2010

## A-road crash deaths 1999 – 2010

Top five



**3 per mile**  
Total: 79



**2 per mile**  
Total: 32



**2 per mile**  
Total: 23



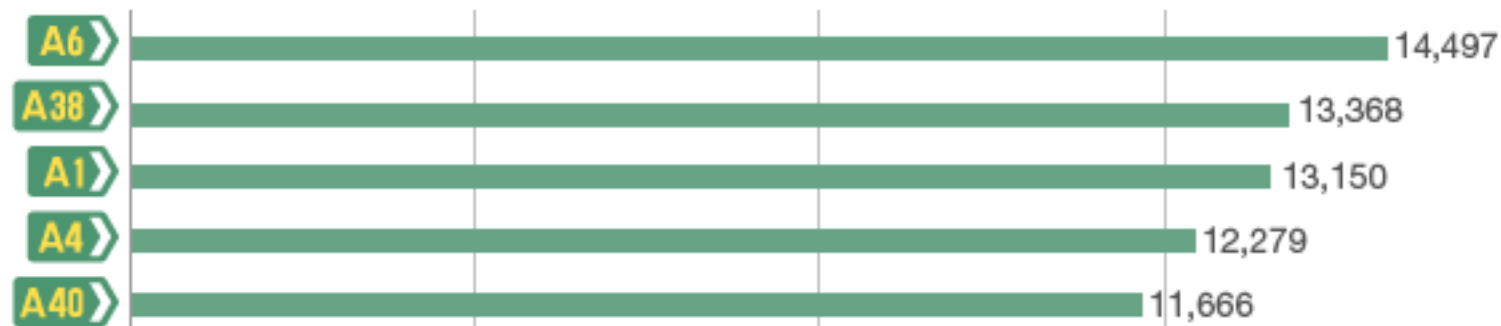
**2 per mile**  
Total: 92



**2 per mile**  
Total: 23

## Crashes

Top five



## Britain's most crash-prone A-road?



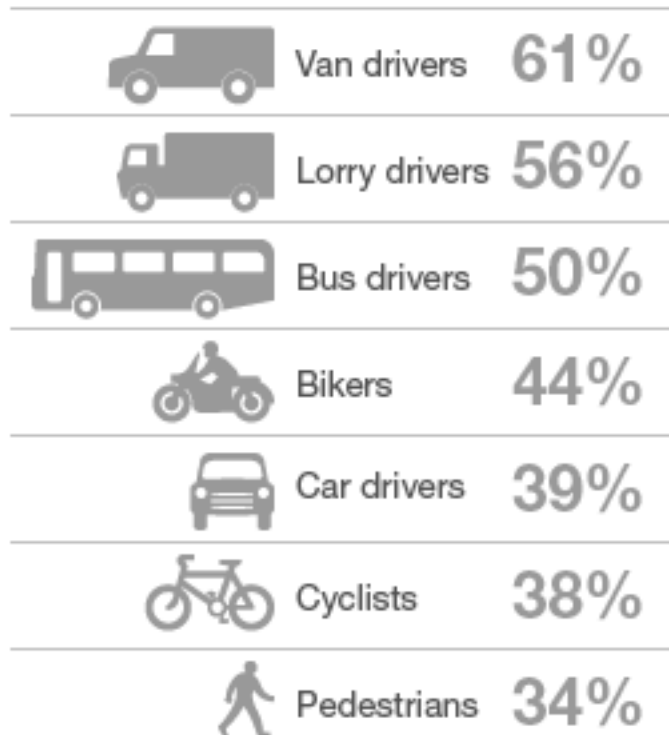
10 miles long, 2,836 crashes, 23 deaths, 284 crashes per mile (1999 - 2010)

## Link between drivers blamed for crashes and offence history



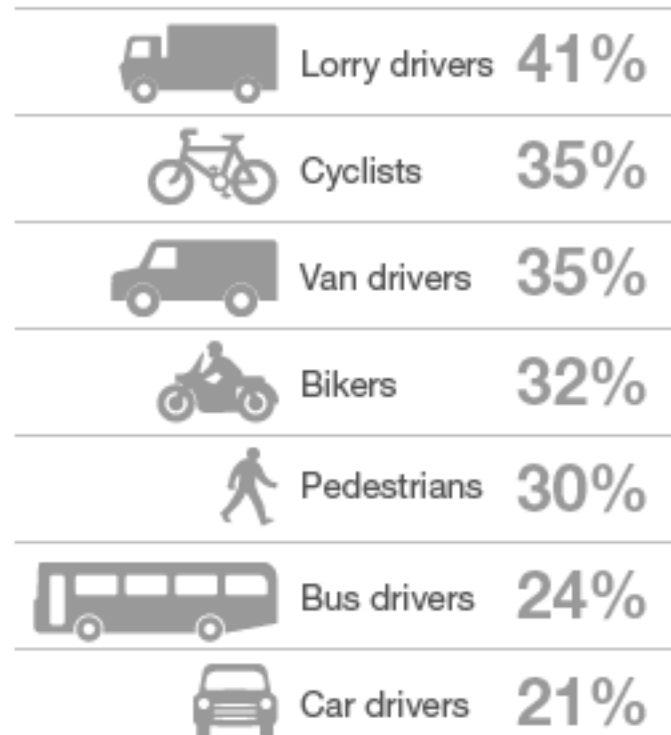
## 'White van man' and truckers top offence history rankings

### Motoring offence



Background rate: 8%

### Criminal record



Background rate: 8%



# 2010 Summary by ONS

- 206648 casualties, down 6% on 2009
- 1850 deaths, -17% , 22660 seriously injured (-8%) motor traffic fell by 2%
- Deaths fell for all categories, except cyclists (+7%)
- 9700 accidents, and 250 deaths, caused by alcohol/drugs, 14% of all accidents.
- Many, >600,000 accidents are not reported

- Drive a new or newer car,
- If safety is important to you, use NCAP ratings to select your next car,
- Use a motorway when you can,
- Become a member of IAM, and ROSPA,
- Be careful on your bike, and do not go near a motor cycle,
- 20mph zones have higher casualty rates (DOT August 2012)

