



1



2



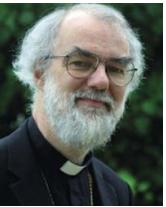
3



4



5



6



7



8



9



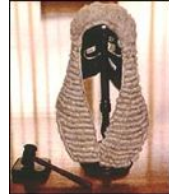
10



David's 2010 Christmas Quiz



All the guests at our party arrived wearing a hat or coat. It's time to go home; can you re-unite them with their belongings! There's one left over; it's owner must have left early without it.



11



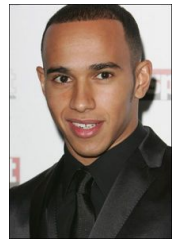
12



13



14



15



16

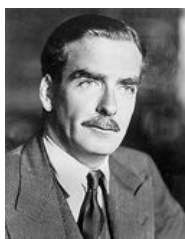


17



18

Happy New Year Everyone!



20



21



22



23



24



25



26



27



28



29



19